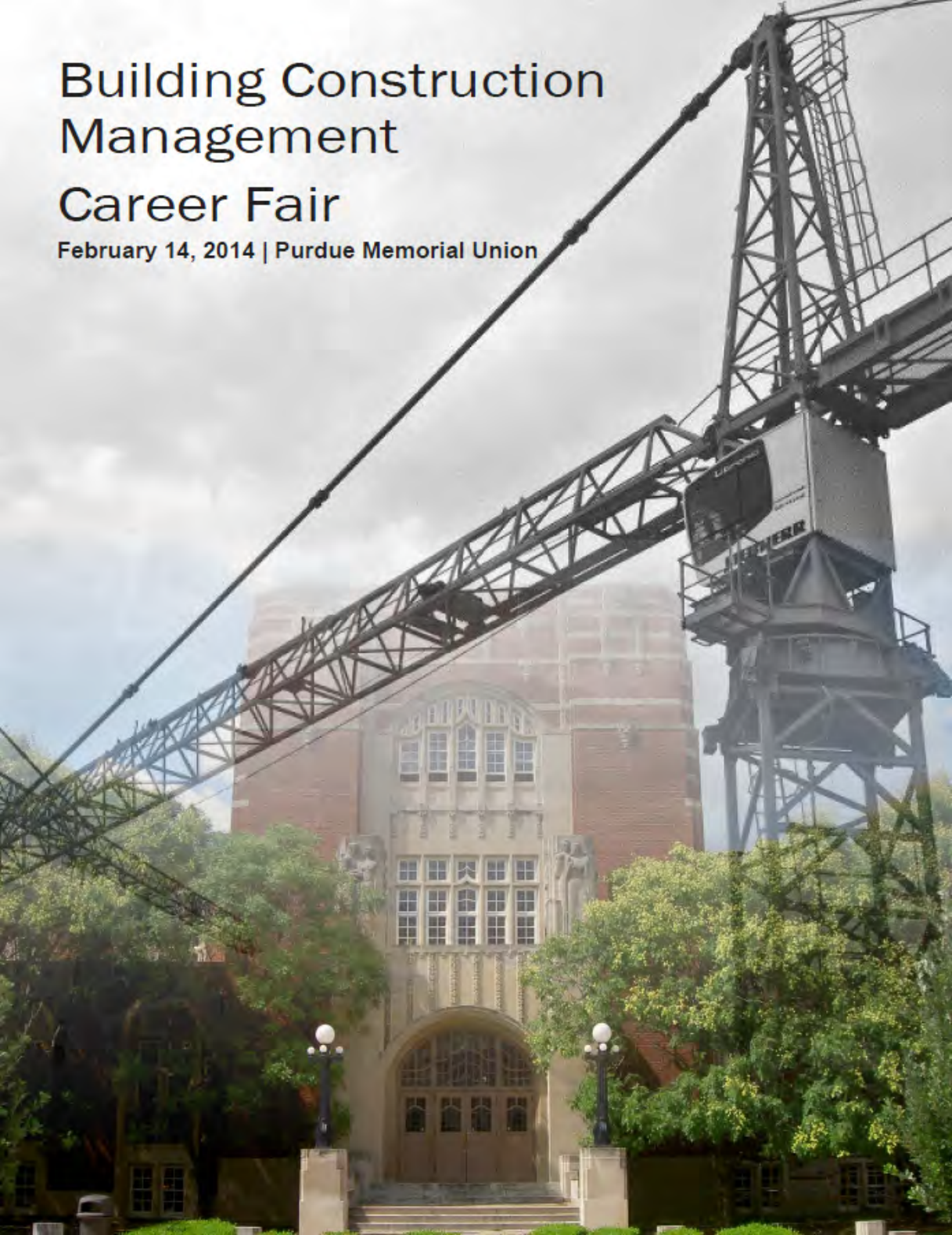


Building Construction Management Career Fair

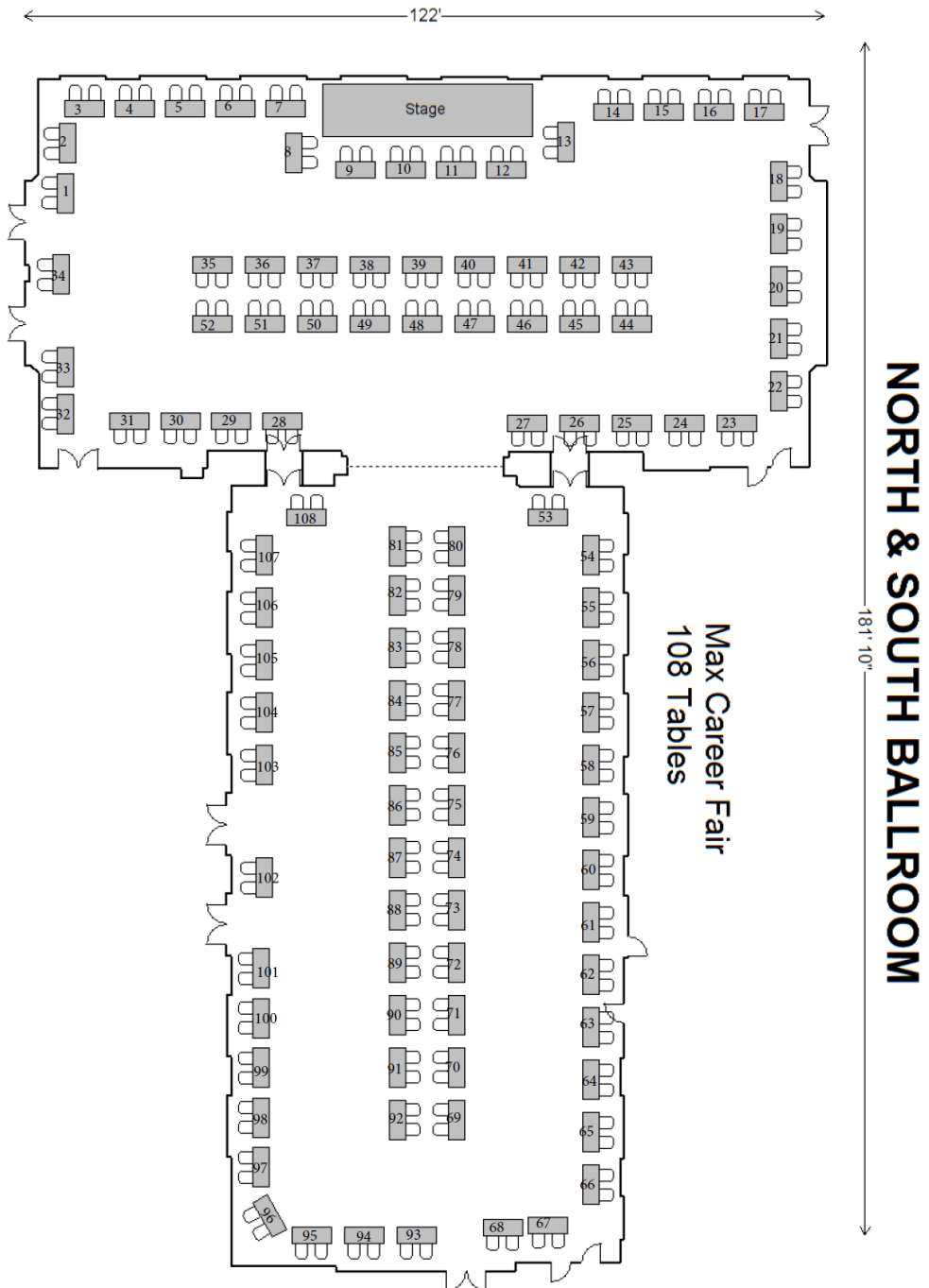
February 14, 2014 | Purdue Memorial Union



*Special thanks to
Branden S. Burke, BCM '12
for his design of the
Career Fair Guide cover.*

Company	#	Company	#
Anning-Johnson Co	65	Lithko Contracting, Inc.	44
Applied Business Communications of AZ LLC	100	M/I Homes	50
Armstrong World Industries, Inc.	8	Madison Construction Company	4
Austin Commercial	13	Mass Electric Construction/Kiewit	93,94,95
Baker Concrete	91	Matrix North American Construction	23
Balfour Beatty Constuction	71	MC Industrial	51
Barnard Construction Company	80	McBride & Son Homes	16
Beck Group, The	35	McCarthy Building Companies, Inc.	52
BMW Constructors, Inc.	63	Meade	5
Bowen Engineering Corporation	67	Messer Construction	62
Brandenburg Industrial Service Company	85	Meyer Najem Construction	76
Buckingham Construction Corporation	37	Michuda Construction, Inc.	66
Burling Builders, Inc.	47	Milestone Contractors, L.P.	17
Cambridge Companies, Inc	42	Novak Construction	84
CBRE, Inc.	9	Olthof Homes	48
CGB Enterprises	36	Opus Design Build, LLC	58
Citgo Petroleum Company	73	PCL Construction	92
Clayco	34	Pepper Construction Company	59
Cobra Concrete Cutting Services Co.	54	Performance Contractors Inc	74
CodeBlue	106	Permasteelisa North America	56
Connelly Electric	79	Poettker Construction Company	25
DE Harvey Builders / Harvey Cleary Builders	28	Power Construction Company, LLC	89
DEEM, LLC	32	Power Design, Inc.	104
DPR Construction	88	Powers & Sons Construction	46
Drees Homes	12	PrecisionPoint, Inc.	7
E&B Paving, Inc.	108	Pulte Homes	72
E&K Companies	87	QCi restoration	2
Envirocon Inc.	18	RK Mechanical	6
Executive Construction	101	Robins & Morton Construction	105
F.A. Wilhelm Construction	98	RTD Construction, Inc	83
F.H. Paschen Construction	81	Ryland Homes	38
Finch Constructors, Inc.	61	Satterfield & Pontikes	90
Frontier Construction, Inc.	19	Saunders Construction, Inc.	49
Gaylor Electric, Inc.	68	Shiel Sexton Company Inc.	69
GE Johnson Construction Company	70	Signature Construction, LLC	57
HASKELL	3	Skanska USA	64
Helix Electric	1	STARCON International	60
Hensel Phelps	99	Sterling Construction Corporation	10
Herman & Kittle Properties	55	The Morse Group	29
Holder Construction	97	The Ross Group Construction Corporation	26
HRP Construction	20	The Walsh Group	102
Hunt Construction Group	96	Thieneman Construction	53
International Contractors, Inc.	21	Thompson Thrift Construction	15
Interstates	45	Tishman Construction Corporation	24
J.C. Anderson, Inc.	39	Titan Electric	82
Jacobs Engineering	103	Traylor Bros., Inc.	77
JE Dunn Construction Co.	86	Webcor Builders	33
JOHN BURNS CONSTRUCTION COMPANY	14	Weis Builders	78
JR Butler	22	Weitz Company	30
Jurgensen Companies	27	Western Utility	43
K. Hovnanian Homes	41	White Construction, Inc.	40
Lend Lease	75	Wight & Company	11
Lenex Steel Company	31		

Bold indicates Construction Advisory Council Member





Founded in 1940, Anning-Johnson Company is one of the largest specialty commercial contractors in the United States. We have an industry-wide reputation for meeting and exceeding customer expectations.

Anning-Johnson Co. has the scale to provide specialized interior and exterior finish contracting anywhere in the United States. Quality, service and performance are hallmarks of the Anning-Johnson Companies.

Through nine district offices, we offer a wide range of contracting operations to general contractors, owners and developers with emphasis on drywall systems, acoustical ceilings, framing, carpentry, structural metal decks, EIFS, lath and plaster, spray fire-proofing, and commercial roofing .

Construction Advisory Council Member

Booth #65

<http://www.AnningJohnson.com>



Low Voltage Structured Cabling

Construction Advisory Council Member

Booth #100

<http://www.abcomllc.com>



Armstrong World Industries, Inc. is a global leader in the design and manufacture of innovative, stylish and environmentally conscious building materials, such as ceilings and floors for residential and commercial use.

Booth #8

<http://www.armstrong.com>



Austin Commercial is one of the largest, most diversified builders in the United States. We are nationally recognized for our exceptional safety records, diversity inclusion program, and our innovative construction solutions in the following markets: advanced technology, aviation, corporate/office, healthcare, hospitality, mission critical, mixed-use/retail/residential, public assembly and sports, and university.

Booth #13

<http://www.austin-ind.com/commercial/>

**BUILD
YOUR
FUTURE
WITH
ANNING
JOHNSON**



**NATIONAL COMMERCIAL SPECIALTY SUBCONTRACTOR
COME SEE US TODAY!
WWW.ANNING-JOHNSON.COM**

ABCOM

APPLIED BUSINESS COMMUNICATIONS



Baker is the nation's leading concrete construction contractor offering a full range of concrete construction and related management services including everything from design/build coordination, preconstruction services, and complete balance of plan. Our professional teams have the knowledge and experience for virtually every type of project conceivable from light commercial to heavy industrial. Add our can-do spirit, and Baker can deliver your project — no matter how large, or how complex.

Construction Advisory Council Member

Booth #91

<http://www.bakerconcrete.com>



Balfour Beatty Construction, Head-quartered in Dallas, TX, is one of the nation's largest commercial construction companies. We provide an extensive range of construction services, including construction management, general contracting, design-build, and preconstruction through more than 2,400 professionals nationwide. The company has been cited as one of the 100 Best Companies to Work For® by FORTUNE magazine for four years in a row.

If you are a student or alumni looking to start your new career or a professional expecting more from the place you work, it's time you learn more about Balfour Beatty Construction. We offer more variety, bigger opportunities, and greater long-term fulfillment. Learn more about us at www.balfourbeatty.com.

Construction Advisory Council Member

Booth #71

<http://www.balfourbeatty.com>



Barnard Construction Company, Inc., based in Bozeman, Montana, is a heavy-civil construction company with projects underway across North America. We specialize in dam, reservoir and hydro construction and rehabilitation, power transmission and distribution, tunneling, inland marine, oil, gas, utility, and sewer and water pipeline projects. Barnard's people are the reason for the success of the company. Our reputation attracts the highest quality personnel, people who are committed to producing projects that set a standard for excellence. At Barnard, we build the riskiest, most difficult, complex jobs we can find and we hire people who thrive on tough work and demanding opportunities.

Booth #80

<http://www.barnard-inc.com>



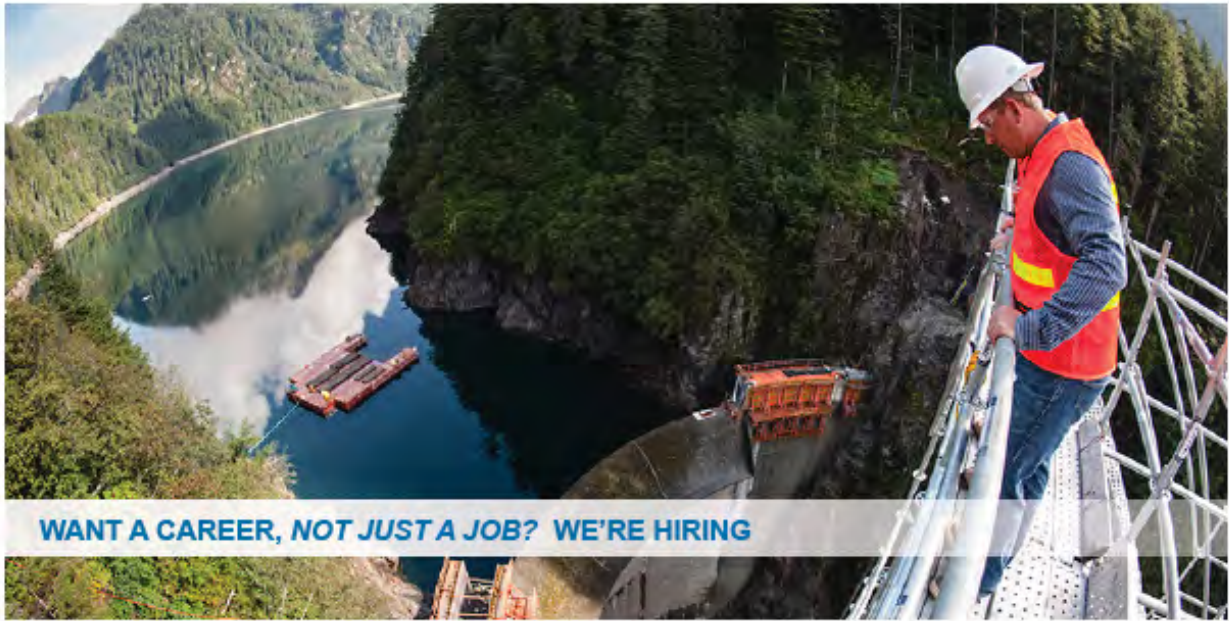
Beck offers a full spectrum of professional services including development, planning, architecture, interior design, construction and sustainability consulting. Beck, headquartered in Dallas, maintains a team of over 550 employees, 40 percent of whom are LEED® APs, working among a network of offices in Atlanta, Austin, Denver, Fort Worth, Mexico City, San Antonio and Tampa. Founded in 1912, the firm has completed numerous high-profile projects, including The Nasher Sculpture Center in Dallas, Texas, the Fidelity Corporate Campus in Westlake, Texas, the Museum of Contemporary Art in Los Angeles, California, the USAA Southeastern Headquarters in Tampa, Florida, and the National Communicable Disease Center in Atlanta, Georgia.

Booth #35

<http://www.beckgroup.com>

BARNARD

People building for People.



WANT A CAREER, NOT JUST A JOB? WE'RE HIRING

Blue Lake Expansion Project, Sitka, Alaska



For nearly 60 years, BMWC Constructors has been a leading provider of industrial construction services to some of the world's largest, most innovative companies. Thanks to our commitment to excellence, our culture of safety and our passion for our work, we've grown to become one of North America's largest, most sophisticated industrial construction companies, too.

Construction Advisory Council Member

Booth #63

Today's BMWC is not your typical industrial construction company. At BMWC, we believe there's always room for improvement—no matter how perfect our performance may seem—so we're constantly evaluating and improving our processes to better serve our clients. This translates to cost-effective, reliable results that make our clients happy today—and for years to come.

Stop by our booth and meet our team!

<http://www.bmwc.com>



Construction Advisory Council Member

Booth #67

Founded in 1967, Bowen is a General Contractor with operation centers and projects located throughout the country. Our team performs work for clients within the Power/Energy, Water/Wastewater and Industrial markets.

<http://www.bowenengineering.com/>

Brandenburg

Brandenburg, established in 1968, is the nation's largest demolition firm with a staff in excess of 600 full-time permanent employees. Brandenburg provides comprehensive asset retirement services for total plant closure as well as selective demolition designed to enhance the efficiency and profitability of ongoing plant operations. Brandenburg performs associated services including electrical and mechanical utility construction and relocation, equipment salvage and rigging, scrap management, environmental assessments and remediation.

Construction Advisory Council Member

Booth #85

<http://www.brandenburg.com>



Buckingham Construction Corporation provides third-party construction services to a wide array of contracting markets. As an industry leader, our portfolio of creative and innovative construction projects includes:

- Multifamily
- Student Housing
- Mixed-Use
- Commercial
- Retail
- Restaurant

Booth #37

<http://buckingham-co.com>



Burling Builders, Inc. is a full service General Contractor headquartered in Chicago established in 1978. Since its inception BBI has been involved with all facets of commercial construction and renovation. These services include conceptual budgeting, pre-construction planning, constructability reviews, general construction, and maintenance. On a typical project BBI's union crews can self-perform excavation, concrete, demolition, general labor, cleanup, window installation, and carpentry. Burling's project experience includes new construction of multi-family residential buildings, office buildings, interior build-outs, medical facilities, parking facilities, site development, retail facilities, banks, religious facilities, education facilities, hotels, and other mixed use buildings.

Booth #47

<http://www.burlingbuilders.com>



Cambridge is a general contractor located in Northwest Indiana but completes projects anywhere within the contiguous 48 states. We currently have projects in Las Vegas, Phoenix, Boston, Evansville, Portland and Houston that will be started/completed in 2014.

We are a family owned company that is growing and has been in business since 1986. Our goal is to hire and develop our talent and offer them opportunities for growth and advancement.

Our continued growth has been attributed to a high degree of workmanship and professionalism. There are plenty of construction firms with knowledge and expertise, but we stand apart through our commitment to exceptional standards when conducting business, working with customers and vendors, and maintaining a professional staff.

Booth #42

<http://cambridgecoinc.com>

Boilermakers come visit us to discuss career opportunities



BURLING
BUILDERS, INC



44 West 60th Street, Chicago, IL 60621 • (888) 224-3294

WWW.BURLINGBUILDERS.COM



**CAMBRIDGE
COMPANIES**

Design-Build Solutions

Building a company focused on success!



Successful Employees
Successful Projects
Successful Customers

Visit us at: CambridgeConstruction.com

Located just 30 minutes from downtown Chicago

CBRE

CBRE Group, Inc. (NYSE:CBG), a Fortune 500 and S&P 500 company headquartered in Los Angeles, is the world's largest commercial real estate services and investment firm (in terms of 2012 revenue). The Company has approximately 37,000 employees (excluding affiliates), and serves real estate owners, investors and occupiers through more than 300 offices (excluding affiliates) worldwide. CBRE offers strategic advice and execution for property sales and leasing; corporate services; property, facilities and project management; mortgage banking; appraisal and valuation; development services; investment management; and research and consulting. Please visit our website at www.cbre.com.

Booth #9

<http://www.cbre.com>



CGB is an innovative and entrepreneurial company whose core business revolves around the grain and transportation industries in the Midwest, along the nation's inland waterways. CGB has expanded its services to include handling and transportation of bulk commodities and logistics operations domestically and around the world.

Booth #36

<http://www.cgb.com>



Construction Advisory Council Member

CITGO Petroleum Corporation is an American success story that originated back in 1910 when pioneer oilman Henry L. Dougherty created the Cities Services Company. In 1965, Cities Services decided to change its marketing brand and introduced the name CITGO. They retained the first syllable of its long-standing name and ended with GO to imply power, energy and progressiveness. The now famous and enduring CITGO trademark logo was born.

Now more than four decades later, CITGO is in the top rank of petroleum marketers in the United States, and one of the nation's top marketers of gasoline. We are a world-renowned supplier of diesel fuel, jet fuel, kerosene, lubricants, greases, waxes, petrochemicals and industrial products.

Booth #73

<http://www.citgo.com>



Clayco is a full-service real estate development, design and construction firm specializing in the art and science of building.

Clayco provides design-build project delivery nationwide for government, corporate, industrial, institutional, residential markets, and banking institutions.

Booth #34

Our people are our greatest asset, we offer each employee the opportunity to grow with Clayco. We demonstrate our commitment to employees through excellent benefit packages, professional development, advancement and the opportunity to give back to the community.




The people who make up Clayco are what gives our company the competitive advantage and makes us stand out to


<http://www.claycorp.com>

Beyond these Walls




As we view these structures through the eyes of their owners, we don't see buildings. We see centers of healing, technology, science, research, manufacturing, entertainment, and progress. We are the builders of people's lives.

CONNECT WITH US
claycorp.com





Cobra Concrete Cutting Services Co. is the leading provider of concrete sawing and drilling in the Chicago-land area. We pride ourselves on our commitment to complete client satisfaction and safety, and we have the reputation and track record to prove it. We truly are "Cutting the Industry Out of the Stone Age".

Cobra also offers Ground Penetrating Radar services to detect objects in both concrete and soil. Such applications are commonly used for locating utility lines, structural steel inside concrete structures such as walls, slabs, bridges etc.

Booth #54

<http://www.cobraconcrete.com>



CodeBlue, an independent third-party administrator for the insurance industry, provides comprehensive, end-to-end claims management outsourcing solutions nationwide for insurance carriers and their customers. We use innovation, active management and the highest standards in process design and technology to reduce claim cycle time, lower severity, minimize adjuster burden and deliver extraordinary service. CodeBlue's subject matter experts are dedicated to returning policyholders to pre-loss condition in the fastest, most efficient and least disruptive manner possible. From water mitigation claims and next day flooring to contents inventory, valuation and property salvage services, CodeBlue is revolutionizing the claims management process through extraordinary speed, science and serv...

Booth #106

<http://www.hsgcodeblue.com>

**CONCRETE
SAWING &
DRILLING**



**GROUND
PENETRATING
RADAR**



Cobra Concrete Cutting Services Co. is the leading provider of concrete sawing and drilling in the Chicago-land area. We pride ourselves on our commitment to complete client satisfaction and safety, and we have the reputation and track record to prove it. We truly are "Cutting the Industry Out of the Stone Age".

Cobra also offers Ground Penetrating Radar services to detect objects in both concrete and soil. Such applications are commonly used for locating utility lines, structural steel inside concrete structures such as walls, bridges, etc.

www.cobraconcrete.com

(773) 775-1111



Cutting the Industry out of the Stone Age.



JOIN CODEBLUE AS WE REVOLUTIONIZE THE RECONSTRUCTION/RESTORATION INDUSTRY



Everything we do is about speed, active management and daily contractor oversight. Serving the insurance industry nationwide, CodeBlue is changing the way reconstruction claims are handled through extraordinary speed, science and service.

Put your reconstruction/restoration expertise and job site knowledge to work building a career around the daily management of contractors and insurance property damage claims.

LEARN MORE ABOUT THE CODEBLUE REVOLUTION



FOR MORE INFORMATION VISIT WWW.HSGCODEBLUE.COM



EXTRAORDINARY SPEED



EXTRAORDINARY SCIENCE



EXTRAORDINARY SERVICE





Connelly Electric Co. is an electrical contractor who provides unparalleled installation and service for all Electrical Construction, Fire Alarm, Voice/Data, and Alternative Energy Systems. In addition, we also provide Electrical Engineering Services for Design/Build Installations. Our diverse customer base includes general contractors, developers, construction managers, educational, institutional and government administrators, and business owners. Our design build engineering team will construct a budget conscience plan to save clients valuable time without compromising quality. To help streamline the construction process, we utilize Building Information Modeling (BIM) where 3D coordination is necessary. Connelly Electric also has LEED Accredited Professionals on staff.

Booth #79

<http://www.connelyelectric.com>



A large General Contracting firm headquartered in Houston, TX with offices in Austin, TX, San Antonio, TX, and Washington, D.C. Specializes in commercial office buildings, corporate interiors, healthcare facilities, light industrial, high rise and low rise office buildings. Seeking individuals that are leaders and team players with great communication skills, intellect, work ethic, creative problem solving skills and core values. Seeking to fill Project Management, Superintendent, and Internship positions in Houston, TX and Washington, DC.

Booth #28

<http://www.harveybuilders.com>

ENGINEERING YOUR FUTURE!



40 S. ADDISON ROAD SUITE 100
ADDISON, IL 60101
P 630-543-9059-F 630-543-9077
www.connelyelectric.com



We are a full plan/spec and design/build mechanical, electrical, refrigeration and piping company. This includes boiler installs. We have a complete service dept. that runs 24/7.

Booth #32

<http://www.deemfirst.com>



DPR Construction

BCM Industry Partner (CAC Member)

We are a unique technical builder with a passion for results. Ranked in the top 50 general contractors in the country over the last 10 years, we are a national commercial general contractor and construction manager that has grown with our customers by delivering measurably more value. With the purpose of building great things—great teams, great buildings, great relationships—DPR is a truly great company. Our relentless accountability, proven technical expertise, and collaborative approach allow us to provide a higher level of quality service on projects of all sizes and complexities, whether it's a multi-million-dollar technical facility or the renovation of a single office.

Construction Advisory Council Member

Booth #88

<http://www.dpr.com>



DEEM®

A Mechanical and Electrical Company



Drees Homes ranks as the twenty-third largest homebuilder in the country as well as the eighth largest privately-owned homebuilder in the country.

Our company's mission is to be America's leading private homebuilder. We are focused on delivering to our customers the home and features that they uniquely desire with the craftsmanship, durability and an 85-year reputation that's uniquely Drees.

Booth #12

Drees has been recognized with many prestigious industry honors, including the home building industry's equivalent of the Triple Crown, winning all three major industry awards: America's Best Builder in 1998 and again in 2008; the National Housing Quality Award in 1994; and National Builder of the Year in 1991.

<http://www.dreeshomes.com>



E&B Paving provides world-class solutions to customers from ten area offices, 14 permanent asphalt and concrete plants, and several portable asphalt and concrete plants. Our distinguished client list includes hundreds of federal, state, county and local governments and agencies; general contractors; commercial, residential and industrial developers; and private businesses of all sizes.

Our paving and consulting services can be applied to highways extending thousands of lane miles or to parking lots accommodating a few dozen vehicles and everything in between.

Booth #108

<http://www.ebpaving.com>



Comprehensive, Best-In-Class Interior and Exterior Construction Services
Ever since we opened our doors in 1956, E&K has been uncompromising in the commitment to deliver the highest quality products and services our clients demand, anywhere they need them. Today, we're one of the largest interior/exterior finish contractors in the U.S., with offices throughout the country and a reputation for excellence. At E&K, only the best in class will do. We've built our reputation on providing a level of quality, service and value that exceeds client expectations.

Construction Advisory Council Member

Booth #87

<http://www.e-kco.com>



Envirocon provides full-service mine reclamation, environmental remediation, demolition, geotechnical, and nuclear services to public and private sector clients across the United States and Canada. A member of the Washington Companies, Envirocon was founded in 1988 to serve the growing demand for environmental cleanup. Envirocon has completed more than 2,800 projects in our history. We have successfully delivered projects many major Fortune 500 companies, potentially responsible party (PRP) groups, trusts as well as many government agencies.

Booth #18

Due to the growing demand for environmental remediation, decommissioning and demolition services in Canada, Envirocon saw the competitive and strategic advantage of cross-border locations and opened their Canadian offices in 2012 in North Van...

<http://www.envirocon.com>



For years Executive Construction Inc. has brought extensive expertise and effective results to a wide range of commercial and institutional general contracting and construction management assignments. ECI's projects, comprising more than 60 million square feet since the firm's inception in 1974, range from \$10,000 to \$40 million in construction costs. The firm has generated over \$100 million in revenue for each of the last five years.

Construction Advisory Council Member

Booth #101

<http://www.ecibuild.com>



With more than 1,500 employees and nearly 90 years of construction experience, F.A. Wilhelm Construction Company is recognized as one of the Midwest's largest contractors. Headquartered in Indianapolis, we have completed more than 8,000 projects ranging from hospitals and museums to major manufacturing and industrial facilities. We offer a variety of services, including pre-construction, construction management, general construction services, design-build services, and trade contracting.

Construction Advisory Council Member

Booth #98

We do the following work with our own forces: earthwork, selective demolition, concrete, masonry, steel, carpentry, equipment installation; and through affiliate companies, mechanical construction, HVAC and sheet metal construction, electrical construction, and test and balance work.

<http://www.fawilhelm.com>



F.H. Paschen is one of the largest, most experienced and respected general contractors in the Midwest, with a growing reputation throughout the United States. Our headquarters is located in Chicago, Illinois and we have offices in New Orleans, Louisiana; Falls Church, Virginia; and Miami, Florida. Since 1975 we have provided full-service construction services on thousands of projects in both the public and private sector.

Our diverse experience and expertise comprises construction, rebuilding, renovation and repair work. Our projects vary from bridge and highway work to schools and transit, as well as many other types of work.

Booth #81

We treat each project with the same small company philosophy: provide personalized service and build relationships of confidence and trust with our clients.

<http://www.fhpaschen.com>



Finch Constructors is a family owned and operated business which provides Mechanical, Electrical, and Construction Management services to commercial and industrial clients throughout the Midwest since 1992.

Construction Advisory Council Member

Booth #61

<http://finchconstructors.com>



F.H. PASCHEN, S.N. NIELSEN
GENERAL CONTRACTORS
773-444-3474 | WWW.FHPASCHEN.COM

BUILDING | CIVIL | JOB ORDER CONTRACTING



A general contractor for over 28 years, Frontier Construction has been a leader in providing inventive and viable construction solutions to our Commercial, Educational, Healthcare, Municipal and Industrial clients in the Chicagoland area.

Our mission at Frontier is to provide long-term, reliable construction solutions for our clients. We do this by establishing lasting relationships and exceeding client expectations through: decisive leadership, clear & concise communication, professionalism, continual education, building high-trust relationships and consistent performance.

Learn more about Frontier's core values and focus at: <http://www.frontierconst.com/core-values>

Booth #19

<http://www.frontierconst.com>



Gaylor Electric, Inc. is in the top 25 electrical contractors in the United States. We have offices nationwide and specialize in electrical contracting and electrical design/build.

Construction Advisory Council Member

Booth #68

<http://www.gaylor.com>

**GROW WITH A COMPANY...
WITH GROWTH IN MIND**

**FRONTIER
CONSTRUCTION**

General Contractor • Design/Build • Pre-Construction Services

Healthcare Education Commercial Municipalities Building Green

www.frontierconst.com

Equal Opportunity Employer

GEJOHNSON
CONSTRUCTION COMPANY

GE Johnson Construction Company is located in Downtown Colorado Springs, CO at the base of Pikes Peak Mountain. Founded by Gil Johnson in 1967, we are a General Contractor.

Our Vision, and that of many of our clients, is focused on the long view. "We must strive to develop relationships, earn a reputation for unparalleled construction services and provide teams dedicated to delivering results that exceed expectations." With revenues between \$250M to \$350M annually, we specialize in building the following facilities: Hospitals, Mountain Resorts, Education, Criminal Justice, Commercial Office, and Advanced Technology. Traditionally, 85% of our work comes from repeat clients.

Location: Headquarters Colorado Springs, CO
Remote offices: Denver, CO
Jackson Hole, WY

<http://www.gejohnson.com>

Construction Advisory Council Member

Booth #70



Haskell is an innovative and leading force in the design-build, construction management and engineering services industry. Our annual volume exceeds \$550M across a broad scope of markets, including public infrastructure, education, food/consumer products, manufacturing, healthcare and federal/military.

With customer service a top priority, the Haskell culture is responsive, entrepreneurial and collaborative. Excellence and delivering successful results are only possible with talented and creative professionals – and we seek the best to join our team.

We are 100% employee-owned and team members embody our values of Team, Excellence, Service & Trust. Lifelong learning is a priority and we offer outstanding opportunities for professional and personal development.

<http://www.haskell.com>

Booth #3



Helix Electric, Inc. is considered to be one of the most successful open-shop electrical contracting companies in the nation. San Diego based Helix Electric has expertise with projects in virtually every field of electrical construction – design/build services, industrial and commercial developments as well as government, institutional, communications and utilities projects. Helix Electric possesses world-class technical experts who maintain vital, long-term relationships and a high level of credibility with general contractors, utility and power user customers we serve. We have a strong reputation and extensive network of customer relationships and have consistently provided new, cutting-edge product innovations.

Booth #1

<http://www.helixelectric.com>



Construction Advisory Council Member

Hensel Phelps Construction Co. is an employee-owned company. Since 1937, we have developed from a local builder in Greeley, Colorado - currently our corporate office - into a \$3 billion per year national contractor with an exciting portfolio of successful projects. Consistently ranked in the top 50 for domestic construction, we build a diverse range of project types. Our district offices are positioned in Orlando, Austin, Phoenix, San Jose, Irvine, Chantilly, Honolulu and Greeley. Celebrating over 75 years of experience, Hensel Phelps has retained its core values of ethical business practices, paired with one of the strongest records in the industry for on-time delivery and cost-effective performance.

Booth #99

<http://www.henselphelps.com>



Herman & Kittle Properties, Inc. (HKP) is the successor to companies that have been around since 1948, and has developed and managed multi-family homes for over 60 years. We develop, build, manage and own multi-family rental housing and self-storage facilities. HKP has developed and managed properties in nine states including high-quality apartment complexes and self-storage facilities throughout the Midwest and the Gulf Region. We currently manage a portfolio of over 100 properties, including over 8,000 apartment homes and over 12,000 self-storage units.

Booth #55

<http://www.hermankittle.com>



Construction Advisory Council Member

Holder Construction Company is a nationally leading Commercial Construction Company consistently ranking in the Nation's Top 100 contractors. Since 1960, our company's focus is on strong relationships and top quality buildings which have resulted in over 85% repeat client business, a list including major Fortune 500 companies and experience spanning across 33 states. It is our mission not to be the biggest, but always the best.

We pride ourselves on our people and our strong company culture. Holder has been listed in the Top 25 Best Medium Companies to work for since 2004, and consistently works with our associates to maintain that reputation.

We are interviewing for Management and Field Supervision Interns and Fulltime Associates.

Booth #97

<http://www.holderconstruction.com/Pages/default.aspx>



HRP Construction Inc. is a solid, aggressive, and growth oriented water, wastewater, and heavy-highway contractor based in South Bend, IN. We enjoy our highest levels of success seeking and building projects of an unusual, complex, and/or difficult nature and scope. We have achieved success in many forms: continued growth, unprecedented financial strength for a firm of our size, an award winning safety program and record, and an exceptional reputation for competency, quality, honesty, and unmatched and relentless service.

All of this is possible only because we are blessed with such extraordinary people. Knowing that more good people are the key to our continued success, we continually seek prime candidates for permanent field and office leadership positions, and for summer inter...

Booth #20

<http://www.hrpconstruction.com>



The Hunt Construction Group team spans across the entire country, and comprises of over 700 employees. Whether located in a Hunt regional office or on a jobsite, our relationship-oriented work environment shines through; every Hunt employee is valued, appreciated and treated with respect.

We have been in the construction industry for nearly 70 years with tangible, positive results that we do the job right. The Hunt team works to create strong client-relationships, and we emphasize quality and skill-utilization in every aspect of construction, no matter the type of project.

Specialties: Building Information Modeling (BIM), Construction Management, Design-Build, Diversity Development, General Contracting, Integrated Project Delivery, Preconstruction, Sustainability, Workplace Sa...

<http://www.huntconstructiongroup.com>



Currently in our 31st year in business, ICI is a family-owned company in its second generation of leadership. Since 1982, we have completed award-winning projects through general contracting, construction management and design/build project delivery.

Our clients represent a variety of industries: retail, healthcare, education and restaurant, to name a few; yet their construction needs are essentially the same – the delivery of high-quality spaces on time and within their budget. ICI not only meets our clients' expectations, we exceed them. The proof: more than 80% of our projects are generated by repeat clients and referrals. Clients continually turn to ICI for their construction needs because of our performance history and strong project delivery.

<http://www.iciinc.com>



Interstates specializes in the design and installation of electrical systems for industrial processing plants and commercial buildings.

Our experience spans many industries. We have been able to offer our expertise in electrical design and studies; automation system design, development, and installation; instrumentation design, procurement, installation, and maintenance; and electrical system installation to hundreds of satisfied customers.

Booth #45

<http://www.interstates.com>



Founded in 1879, J.C. Anderson, Inc. is one of Chicagoland’s oldest and largest interior general contractors.

We perform interior construction for building owners, developers, private and public corporations, property management firms, and various other facilities. With projects ranging from building maintenance to multi-million dollar contracts, we represent an integral part of the Chicago region’s growth.

Dedication to providing real world solutions drives J.C. Anderson, Inc. to serve our client’s needs while exceeding their expectations.

Booth #39

<http://www.jcandersoninc.com>



Jacobs successfully delivers the full breadth of building services – planning, architecture, engineering, construction management, program management, and design-build – to a diversified base of leading public and private clients across the globe.

We offer design and construction-related services for new buildings as well as provide expansion, renovation, and refurbishment of existing facilities. Specialized capabilities include energy and power, master planning, design, and commissioning services.

Building types include:

- Commercial facilities
- Office and corporate headquarters buildings
- Aviation terminals, hangars, and other facilities
- Federal, government, municipal and civic facilities

Booth #103

<http://www.jacobs.com>



Headquartered in Kansas City, Missouri, JE Dunn Construction is an employee owned commercial general contractor with expertise in construction mgmnt, program mgmnt and design-build projects. With a volume of \$2.3 billion for 2012, we are ranked as the 10th largest general building contractor in the nation by Engineering News-Record.

We are committed to the people that make this company a success. We feel our greatest asset is the relationship we have with others. Over 80% of all our business is derived from existing or referral client relationships. This speaks volumes about the quality of the projects we build and the depth of our services. Our mission is to provide construction services in a professional manner to exceed the client’s expectations.

Construction Advisory Council Member

Booth #86

<http://www.jedunn.com>



John Burns Construction is a family-owned, privately-held corporation that began in Orland Park, Illinois in 1906. Today the company operates as a multi divisional construction organization, offering services in construction, design-build, development, and maintenance services

John Burns Construction maintains its company headquarters in Orland Park, IL, and supports offices in Chicago & Dallas.

Our business philosophy is dedicated to strong customer relationships that generate repeat business. We have built a reputation for being a solid and progressive company that is trustworthy, responsible, and a leader in our industry and in the communities in which we live and work.

Booth #14

<http://www.jbcc.com>



J.R. Butler is a glass and glazing company. Our main objective has been to continually improve the quality of our products and the efficiency of our methods. By embracing new and innovative methods and technologies, we have been on the cutting edge of the glass and glazing industry, offering positive solutions, top performance, and various high-quality systems for the demanding projects of today.

Booth #22

<http://jrbutlerinc.com>



The Jurgensen Companies are a family owned business group which primarily focuses on highway, commercial, utility construction, and the production of asphalt paving materials and aggregates.. The company is vertically integrated with aggregate and asphalt hot mix facilities that support the construction operations and supply outside users.

Booth #27

The company comprises intelligent, skilled and experienced people and the most innovative technology available to get the job done. We hire the most qualified, self starting and enthusiastic employees to work within our organization. We offer an environment that cultivates responsibility and promotes the development of your potential, resulting in excellence in your chosen field. - See more at: <http://www.reversedout.com/demo/jurgensen-jrjnet/Jur...>

<http://www.jrjnet.com>

SERVICES > **HEAVY HIGHWAY:**
The John R. Jurgensen Company is a leading provider of heavy civil services in Ohio, Kentucky and Indiana. Specializing in design/build services, public sector infrastructure projects, public/private partnerships, construction and asphalt paving.

PRODUCTS > **AGGREGATE:**
Jurgensen Aggregate crushed stone is sold throughout Ohio, Indiana, and Kentucky. Our limestone and crushed stone products are used in a wide variety of construction applications as well as in the asphalt, concrete and construction industries.

CAREERS > **JOIN THE TEAM!**
If you are interested in a long-term career, please inquire at jrjnet.com. We are regularly searching for new employees.

**JURGENSEN
COMPANIES**
INFRASTRUCTURE SOLUTIONS

A TALENTED AND DEDICATED TEAM OF PROFESSIONALS
CREATING INFRASTRUCTURE FOR THE ROADS YOU TRAVEL

11641 Mosteller Road • Cincinnati, Ohio 45241
513.771.0820 • jrjnet.com



As one of the Nation's leading public homebuilders, K. Hovnanian® offers many challenging careers you can take advantage of. We see every process as an opportunity for improvement and every situation as a venue for innovation. But innovation also requires dedication on our part. So, we foster an environment in which our Associates can flourish by providing career development programs unique to our industry. Whether your interest is in accounting, administration, architecture, construction, finance, information services, land acquisition, land development, purchasing, legal, marketing or sales, K. Hovnanian® has an abundance of career opportunities available.

Booth #41

<http://www.khov.com>



Lend Lease is one of the world's leading fully integrated property and infrastructure solutions providers, with strong development, investment management, project and construction management and asset and property management capabilities.

Founded in Sydney in 1958 by Dutch immigrant and innovator Dick Dusseldorp, the group was born out of a vision to create a company that could successfully combine four disciplines; property, financing, development and investment.

Lend Lease's aim is to be the leading international property and infrastructure group

Construction Advisory Council Member

Booth #75

<http://www.lendlease.com>



Structural steel and miscellaneous metals fabricator

Booth #31

<http://www.lenexsteel.com>



Lithko Contracting, Inc., is one of the nation's largest full-service, total-package concrete contractors. Lithko is a growing commercial concrete construction company with offices in Allentown, Cincinnati, Columbus, Indianapolis, Kansas City, Tulsa, Oklahoma City, Charlotte, Raleigh & Nashville. Lithko specializes in the delivery of cast-in-place walls, slabs, columns, tilt-up, site-work, super-flat floors and structural concrete, Lithko has grown from one office in 1990, to 10 offices and over \$215M million in revenue in 2013.

Lithko is committed to exceeding both our internal and external customer expectations' by providing cost-effective and quality concrete projects, and creating opportunity to career progression through exposure to responsibility and continual company gr...

Booth #44

<http://www.lithko.com>

LENEX



Founded in 1976 by Melvin and Irving Schottenstein, M/I Homes is one of the nation's leading homebuilders with over 80,000 homes sold and is dedicated to building homes of uncompromising quality, superior design and enduring value. In simple terms, we care about our homebuyers. Headquartered in Columbus, Ohio, with divisions in 7 different states, we approach the sale and construction of each M/I home as if it were our own home. We instill this "we care" philosophy in every level of the company and demonstrate it in every stage of the homebuilding process. It is what we believe and it is how we run our company.

Booth #50

<http://www.mihomes.com>



Madison Construction is a fully integrated General Construction company employing some of the most highly experienced and successful individuals in the industry. Madison Construction's senior staff has managed some of the largest, most complex construction projects that encompass national and regional projects ranging from planned mixed-use communities and convention center districts such as McCormick Place in Chicago.

Madison was listed as #7 in 2011 and again in 2012 on Crain's Fast Fifty. In 2012, Madison was listed on Crain's list for Chicago's Largest Privately Held Companies as well as on ENR's Midwest Construction's Top Contractors.

Booth #4

Madison Construction is currently General Contractor for Navy Pier's reconstruction and just completed East-West University's Stud...

<http://www.madisonconstruction.net>



We're one of the largest and most respected construction, mining and engineering organizations operating in North America and Australia. Consistently ranked in the top five among Engineering News-Record's Top 400 Contractors, we work on a variety of multi-million to multi-billion dollar projects.

Construction Advisory Council Member

Booth #93,94,95

www.kiewit.com



Matrix North American Construction, Inc. and Matrix North American Construction, Ltd. ("Matrix NAC") are direct hire union construction companies of Matrix Service Company. Matrix NAC provides a full range of general construction, maintenance and renovation services to North American Industrial Markets. Matrix NAC has offices in Canonsburg, PA, Hammond, IN, and Burlington, ON, Canada in addition to project locations throughout North America.

Matrix NAC was recently acquired by Matrix Service Company from Kvaerner ASA. As a core business within the Matrix family of companies, Matrix NAC has access to an expanded resource base and broader industry and geographic coverage. For more information visit www.matrixnac.com.

Booth #23

<http://www.matrixnac.com>



MC Industrial, Inc., and independent McCarthy company, serves the specialized construction needs of the industrial market nationwide. We've built our foundation on decades of proven experience in automotive, food and beverage, aviation/aerospace, manufacturing and power markets.

Booth #51

<http://www.mc-industrial.com>



McBride & Son Homes is the largest Residential Builder in Missouri and is also the largest 100% Union Trade Builder in the Nation. We are looking for the very best individuals to join our Team to continue our success in the Residential Market. McBride is currently looking for both Interns and also Full Time Employment. McBride is looking for students to ultimately progress to the Project Manager position.

Booth #16

<http://www.mcbridehomes.com>



Kiewit



WE BUILD LEADERS.

A career with Kiewit is all about opportunity: the opportunity to see more, learn more, achieve more and earn more. Are you ready to make it happen today?

Launch your new career. Apply online at kiewit.com/careers.



KIEWIT.COM



McCarthy Building Companies, Inc. has been a community builder for nearly 150 years. Founded as a family-owned construction company, we are now 100% employee owned and the 10th largest commercial builder in America.

Clients turn to McCarthy to solve their toughest construction challenges, and our employees are inspired to step up and overcome these. We provide construction management, general contracting, design-build and self-perform service nationwide. The firm has full-service offices in Atlanta, Dallas, Houston, Phoenix, Las Vegas, St. Louis, San Diego, Newport Beach, San Francisco and Sacramento.

Booth #52

<http://www.McCarthy.com>



Meade leads the field in design, construction and maintenance of electric, natural gas, and telecommunications delivery systems, both above and below ground and has done so for more than 100 years.

No wonder hundreds of local, state and national-level government bodies and agencies depend on Meade to help them run smarter and safer. So do leading utility companies, general contractors and other clients in the most demanding industries. They know nobody beats Meade for professional expertise, integrity and reliable delivery of quality service.

Booth #5

We invest in the newest equipment and technologies to give you the best possible results.

We also use environmentally responsible procedures, because we're in this for the long haul.

<http://WWW.MEADE100.COM>





Messer Construction Co. is a regional construction manager, general contractor and design-builder with an 81 year track record of proven success. Messer Construction is an employee owned company with offices in nine locations: Columbus, Cincinnati, and Dayton Ohio; Louisville and Lexington Kentucky; Indianapolis, Indiana; and Knoxville & Nashville, Tennessee, and Charlotte, North Carolina. We are a company of builders, with more than 700 construction leaders and innovators. Our long-term, sustainable success lies in the quality of our construction professionals. We believe in growth-from-within and invest in career planning & development to lead construction innovation within the industry.

Construction Advisory Council Member

Booth #62

<http://www.messer.com>



As one of the Midwest's leading construction firms, the foundation of Meyer Najem is our commitment to client satisfaction, employee satisfaction and the communities we serve. Through those commitments, our management-owned firm consistently delivers on promises and exceeds expectations. As a result, Meyer Najem is repeatedly selected for premiere projects in the healthcare, senior living, commercial, church/religious, government and institutional markets throughout the Midwest.

Construction Advisory Council Member

Booth #76

<http://www.meyer-najem.com>



Founded in 1919, Michuda Construction, Inc. is a family owned, full service General Contracting and Construction Management firm based on the south-side of Chicago. Michuda specializes in constructing and renovating facilities for health care, educational and commercial clients throughout the Midwest. By focusing our resources on select business sectors throughout the Midwest, Michuda Construction, Inc. is able to consistently deliver superior service tailored to our clients' needs while maintaining a healthy balance between life and work for our employees.

Construction Advisory Council Member

Booth #66

<http://www.michuda.com>



Milestone Contractors, L.P. is a fully integrated highway, heavy construction, asphalt paving, concrete paving, and site-development general contractor, providing construction services primarily within the state of Indiana. Milestone's principal offices are located in Indianapolis, Lafayette, Columbus, Bloomington, Richmond and Portland Indiana. We operate sixteen hot-mix asphalt plants strategically located across Indiana. Depending on the season we employ upwards to 900 construction professionals and tradespersons. Construction services provided by Milestone include asphalt paving, bridge construction, structural concrete, utility and excavation work, as well as industrial, commercial, and residential site development.

Booth #17

<http://www.milestonelp.com/>

NOVAK CONSTRUCTION

Since 1980, Novak Construction Company has constructed buildings and interiors, delivering projects in a timely, cost-effective manner. Novak's reputation and diverse client base has accounted for steady, well-managed growth as a solid, mid-sized firm. Novak is committed to making sure the client is satisfied with the process, outcome, and value.

The company portfolio encompasses a wide spectrum of clients and capabilities including: corporate, commercial, healthcare, senior living, hospitality, industrial, retail and restaurants, institutional, interiors, and specialty venues.

Booth #84

Every member of the Novak team from the project director and project manager to the site superintendent, subcontractors, and office staff, is committed to putting the clients' needs first.

<http://www.novakconstruction.com>



Olthof Homes is a home builder in Northwest Indiana and builds single family homes, town homes, and condominiums. They are the largest privately owned home builder in the Chicagoland market and have active communities in Lake and Porter County Indiana. Olthof Homes competencies allow them to develop their own communities in addition to designing, constructing and selling their homes.

Booth #48

<http://www.olthofhomes.com>

**Build Your Career
With Olthof Homes**

We are the largest privately held home building company in Chicagoland building single family homes and a variety of attached single family products.

We specialize in both home building and land development. We are currently looking for Construction Management graduates to fill our Land Development Superintendent position.

Contact Joe Lenehan at
219-558-8080 ext.308 for more information.

Olthof Homes
Enjoy Life!

www.olthofhomes.com

8051 Wicker Ave. • Suite A • St. John, IN 46373



The Opus Group® is a family of national commercial real estate companies headquartered in Minneapolis, with expertise in development, project management, construction, architecture and engineering. Recognized as a national leader in office, industrial, retail, institutional, residential living and government projects, The Opus Group delivers the highest quality buildings.

Driven to create great buildings, The Opus Group listens to and collaborates with clients, finding excellent real estate opportunities, and making communities better places to live, work and raise families. Its team members bring combined decades of experience, building on a rich history started in 1953. Collectively, these companies have completed in excess of 2,600 projects totaling 264 million square feet.

Booth #58

<http://www.opus-group.com>



The PCL family of companies is a group of independent construction firms with an annual volume of more than \$6 billion. PCL is ranked the 6th Top US Contractor by ENR. Our areas of expertise are commercial buildings, transportation infrastructure, water infrastructure and industrial. With projects spanning the entire US, our district offices reside in California, Washington, Alaska, Hawaii, Arizona, Texas, Colorado, Minnesota, North Carolina, Georgia and Florida. PCL is 100% employee-owned with more than 108 years of construction excellence. Our commitment to professional development has allowed our employees to build their career with PCL and help us stand out as a leader in construction.

Construction Advisory Council Member

Booth #92

<http://www.pcl.com>



Pepper Construction Group (www.pepperconstruction.com) is a general contracting and construction management firm that primarily serves the non-residential and private sector markets. Since 1927, the company has served a full range of clients including: retail, education, health care, institutional, industrial, commercial, interiors, hotel, and entertainment markets. With 2012 gross revenues of \$1.02 billion, this Chicago-based privately owned company has more than 950 employees and major offices in Illinois, Indiana, Texas and Ohio.

Construction Advisory Council Member

Booth #59

<http://www.pepperconstruction.com>



Performance Contractors, Inc. is one of the largest Industrial General Contractors in the Gulf Coast region. Focusing primarily on the PetroChem, and Oil Refinery markets. In business for 34 years, with offices in Baton Rouge, LA; Houston, TX; Mobile, AL; and Lake Charles, LA. Performance's annual sales volume is in excess of \$1,000,000,000 per year, and we currently have approximately 8,000 employees. Performance is a growing company with over 52% annual growth rate through the last 10 years. We are interviewing individuals interested in starting and growing their career in the industrial sector.

Construction Advisory Council Member

Booth #74

<http://www.performance-br.com>

My Career.

My Company.

My Legacy.



Building careers since 1906.
& legacies

A Top 100 Workplace for eight years running, PCL has a wide range of employment opportunities for you to explore in 29 offices across North America. Check out PCL.com/careers.
Start building your legacy today!





Permasteelisa North America is an organization which engineers, manufactures and installs architectural envelopes or curtain walls, using materials such as glass and aluminum. The Company is the North American subsidiary of Permasteelisa S.p.A., headquartered in Vittorio Veneto, Italy. With revenues of approximately \$1.6 billion worldwide, Permasteelisa S.p.A operates in approximately thirty countries with over 6,000 employees. Permasteelisa North America operates in eight locations: Connecticut, Minneapolis, Chicago, New York, Miami, New Jersey, California and Montreal, Canada. The Company is recognized for their innovative and environmentally sensitive designs as well as the Company's end-to-end services of design, production and installation.

Booth #56

<http://www.permasteelisagroup.com>



Founded in 1980, Poettker Construction Company is a 2nd generation family-owned business that provides construction management, design/build and general contracting services for the educational, healthcare, retail, institutional, religious, and industrial markets. Our Mission is to exceed client expectations in every aspect of the construction process. At Poettker Construction we strive to understand the needs of each client and provide the talent required to make their construction visions a triumphant success. That makes building relationships as important as crafting concrete and steel. Our focus has always been quality work, attention to detail, responsible financial management and the development of lasting relationships. The Poettker Difference...We build relationships and build...

Booth #25

<http://www.poettkerconstruction.com>



Founded in 1926, Power Construction is a management-owned company that has worked primarily in the Chicago area since 1926. Among the firms doing so, we are the largest. We are able to deliver a higher level of service by concentrating on five customer markets; Corporate, Developer, Healthcare, Hotel, and Education. We believe construction is much more than just a business of bricks and mortar; it is a business of people and service. As such, our company's organizational depth and stability are essential to success. Today, more than 90% of our work is awarded by repeat customers. This record for repeated selection demonstrates our firm's reputation for performance and customer satisfaction.

Construction Advisory Council Member

Booth #89

<http://www.powerconstruction.net>



Join the Power Design team, and you'll get more than a job. You'll discover countless opportunities to build the career you've always wanted. Recognized by Tampa Bay Business Journal as a "Best Place to Work" (one of the top three in 2009 and a finalist in 2012) and by the Associated Builders and Contractors organization as an "Accredited Quality Contractor," we know our success as a company is measured by the individual achievements of our team members. That's why we invest the time and resources to help every team member succeed. With personalized career coaching, technical skills development and management training programs, you'll find a career path that's right for you at Power Design.

Booth #104

<http://www.powerdesigninc.us>



Powers & Sons Construction Co. was founded in 1967 and has evolved to be a well recognized multi-million dollar General Contractor, Construction Manager, and Design-Builder. The firm's commitment to excellence has driven us to recruit and develop a topnotch team of construction experts; the company's staff has grown from 3 to more than 100 professionals, which consist of registered engineers, architects, and other specialists. For more than 45 years, Powers & Sons has built a solid, unblemished record of integrity, quality and cost effectiveness in the industry. As a third generation family owned company Powers & Sons continues to grow and is known as a premier construction company in the Midwest. We are proud to be ranked as one of the nation's largest African American owned b...

Booth #46

<http://www.powersandsons.com>



PrecisionPoint is a professional services firm that provides 3D Reality Capture Solutions to the Engineering & Building Construction Industries providing design & construction grade 3D point clouds that enable our clients to design, build, and interact with dimensionally accurate virtual environments captured by our industry proven 3D laser scanning workflows. Our clients in the building construction industry look to our experienced team to help them take control of their projects with our innovative 3D laser scanning and BIM solutions using Revit & Navisworks. Headquartered in Carmel, Indiana, a northern suburb of Indianapolis, the company is strategically located to cost effectively offer our professional services to clients across the United States.

Booth #7

<http://www.precisionpointinc.com>



PulteGroup has been providing the American Dream of homeownership to families for 60 years. What started as a single home built and sold by the entrepreneurial spirit of an 18-year-old Bill Pulte, has grown into the industry's sole multi-brand homebuilding company with the ability serve customers in all phases of life. Today, PulteGroup operates in approximately 60 markets throughout the country.

Construction Advisory Council Member

Booth #72

<http://www.pulte.com>



QCi Restoration is Chicagoland's premier disaster restoration company. From water mitigation to fire and smoke restoration and full reconstruction services QCi handles residential and commercial insurance losses with integrity and professionalism and we are looking for talented individuals to add to our team!

Booth #2

<http://qcirestoration.com>



At RK Mechanical our core values define who we are and are the driving force behind everything we do. The RK Mechanical culture is built around expertise, enthusiasm and entrepreneurial spirit. As such, we take great care in finding talented and driven individuals to join the RK team. We are looking for people interested in building a career, not just working at a job. In addition to the opportunity to work on landmark projects alongside many of the industry's most talented leaders, RK Mechanical employees also enjoy access to ongoing training and education opportunities, in-house Wellness Coaching and an industry-leading comprehensive benefits package. We know that our business is about far more than the products we install and the services we provide - it's about people.

Booth #6

<http://www.rkmi.com>



Robins & Morton is a privately held construction and engineering company that consistently ranks among the 100 largest U.S. builders in Engineering News-Record Magazine and one of the best companies to work for in America.

A commitment to client satisfaction, excellence in execution, and providing the best environment for our employees' growth cultivates a culture that makes Robins & Morton a trusted design and construction partner. People make the difference— and our people share a commitment to client service, safe behaviors, quality performance, integrity, and respect. This common culture is a catalyst for attracting and retaining the best people who can in turn deliver exceptional service and creative solutions to our clients.

Booth #105

<http://www.robinsmorton.com/careers>



Put your education to **work** alongside the most talented **experts** in the industry! RK Mechanical offers a variety of **career paths** with **opportunity** for **continuing education** and **advancement**. Learn more and apply online at www.rkmi.com/careers.



[Our Comprehensive Benefits Package Includes]



competitive wages
+ matching 401(k)



medical + dental +
vision + life insurance



in-house wellness
coach + programming



education + training
+ certification



rkash incentive
program



paid vacation +
sick time

Denver, Colorado + Henderson, Colorado | 303.355.9696 | www.rkmi.com



RTD is a General Contractor specializing in Water, Wastewater and Underground Utility Construction. RTD manages projects located in the Southeast United States.

RTD and its leading team of innovators have over 150 years of combined construction experience. Our team delivers 100% of their commitment, to each and every project making RTD Construction the best choice for any project in the water and wastewater construction industry. RTD achieves success with three core values in mind honesty, integrity, and professionalism.

Positions Available in Estimating, Project Management, Internships & Field Engineers.

Booth #83

<http://www.rtdconstruction.com>



Ryland Homes is the United States' 7th-largest developer and new home-builder. The builder, based in Westlake Village, California, has built over 300,000 homes across the United States since its inception, focusing primarily on first-time homebuyers and first- and second-time moveup buyers. Ryland currently builds in 17 states and the District of Columbia.

In addition to its homebuilding segment, Ryland's other business unit is RMC Mortgage Corp. which specializes in financial services such as consumer mortgages, homeowner's insurance, title, and escrow services.

Booth #38

<http://ryland.com>



Satterfield & Pontikes Construction, Inc., has used a customer-centric approach to business & cutting-edge technology to become one of the leading, award winning construction companies in the Gulf Coast region. Led by President & CEO George A. Pontikes Jr., S&P has offices in Texas, Louisiana, Florida, and more. S&P has successfully completed more than 500 projects, from new theaters to renovations of New Orleans schools ravaged by Hurricane Katrina.

Construction Advisory Council Member

S&P specializes in General Contracting, Construction Manager-at-Risk & Design-Build delivery methods. Our clients vary across a wide spectrum: educational, institutional, commercial, entertainment, manufacturing, retail, disaster relief, airport, health care, & facilities management.

Booth #90

<http://www.satpon.com>



Saunders Construction is one of the most respected commercial builders in the Rocky Mountain region. Saunders is recognized for commitment and focus that help turn ideas into projects and projects into landmarks. The culture Dick Saunders established in 1972 is one of personal integrity and open communication, and the organization continues to embody that spirit at every level. We honor all commitments. We meet tough deadlines. Our ability to consistently meet or exceed the goals of the project team creates a responsive client relationship—building confidence one job at a time.

Booth #49

<http://www.saundersci.com>



Shiel Sexton Company, Inc. is among the largest general contractors and construction managers in the Midwest. SSC has over 50 years in providing the highest quality construction services available. SSC provides clients with preconstruction services including conceptual budgeting and constructability review. We work closely with customers early on, which enables us to monitor issues. This provides our customers with the best value because we don't compromise while meeting budget goals. We collaborate with our customers to plan, budget and build facilities that exceed their expectations with groups of experts in several selective markets. To do so, we attract, develop and retain dedicated professionals who value relationships, integrity, enjoyment, shared profitability, and professional...

Construction Advisory Council Member

Booth #69

<http://www.shielsexton.com>



Signature Construction, LLC, is the Midwest's premier multifamily construction manager company. Signature Construction is an in-house construction group for Pedcor Investments located in Carmel, Indiana. Since our inception in 1986 we have built over 16,000 apartment units in a 12 state service area.

Booth #57

<http://www.pedcor.net>



Skanska USA is one of the largest, most financially sound construction and development networks in the country, serving a broad range of industries including healthcare, education, sports, data centers, government, aviation, transportation, power, energy, water/wastewater and commercial. Headquartered in New York with 39 offices across the country, Skanska USA employs more than 8,300 employees committed to sustainable construction and development and an injury-free workplace.

Construction Advisory Council Member

Booth #64

<http://usa.skanska.com>



STARCON is a privately held company founded in 1983, STARCON's corporate office is located in La Porte, Texas with regional offices in Illinois, Louisiana and West Virginia. In November 2010, Cianbro acquired STARCON. Serving clients in the refining, chemical, food processing, metals, paper and power industries, STARCON is a full service mechanical contractor with an uncompromising commitment to safety, quality, training and innovation.

Construction Advisory Council Member

Booth #60

STARCON provides comprehensive industrial and mechanical contracting services to a wide variety of process industry clients. Services include capital construction, plant maintenance, turnaround execution, project management, specialty welding, insulation and scaffolding.

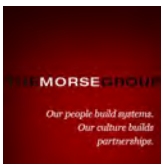
<http://www.starconinternational.com>



Sterling Construction Corporation

Booth #10

<http://construction.thesterlinggrp.com>



The Morse Group is a business entity that brings industrial products, engineering, contracting and automation services together to provide the commercial, industrial and utility markets with solutions for their unique requirements. The goal of each member company in The Morse Group is to be recognized as a leader in their chosen markets by providing customers with incomparable value through services performed to the highest standards of quality.

Booth #29

<http://www.themorsegroup.com>



The Ross Group Construction Corporation is a full service prime contractor providing construction services through the Central United States since 1979. We provide a wide range of services including Design-Build, General Contracting, Construction Management and Facilities Maintenance. We maintain an outstanding Safety record and our primary customer is the U.S. Department of Defense. We also have a number of commercial projects currently in process.

Booth #26

www.trgcc.com



The Walsh Group, founded in 1898, is a family owned and operated company. As one of the nation's largest contractors, The Walsh Group provides construction management, design-build and self-performed services through the operations of three subsidiaries: Walsh Construction, Archer Western Contractors, and R&L Brosamer. Major attributes to The Walsh Group's success is their commitment to the highest standards for quality and safety. The Walsh Group regularly employs over 5,000 engineers, managers, and skilled trades' workers and boasts one of the nation's largest equipment fleets. Walsh strives to be the employer of choice for employees and the builder of choice for customers.

Construction Advisory Council Member

Booth #102

<http://www.walshgroup.com>



Thieneman Construction is a premier environmental contractor, building municipal and industrial water and wastewater facilities.

Thieneman Construction is dedicated to exceeding client expectations by producing at a high level of quality and safety, meeting project deadlines and offering fair pricing. We take responsibility for every project from conception through completion and we self-perform the majority of the work: earthwork, structural concrete, yard pipe, process equipment, metals installation, and exposed mechanical. This allows us to closely manage our projects which maintains our competitive edge and offers employees a broad range of opportunities

Booth #53

Established in 1999, we currently operate from two office locations in Westfield, IN and Merrillville, IN.

<http://www.Thienemanconstruction.com>



Thompson Thrift Construction

Founded in 1986, Thompson Thrift Construction is a respected and nationally recognized, full-service construction company dedicated to serving individuals and businesses throughout the United States. A reputation for service, quality and trust has accompanied its success, along with a record of delivering superior projects on time and on budget. Although our current focus is in multifamily, Thompson Thrift's depth of projects continues to include: retail, student housing, restaurants, senior living, healthcare, historic renovation, warehouses, commercial, professional/office and industrial. The company is privately owned and employs 150 people. It is headquartered in Terre Haute, IN with offices in Indianapolis, IN and Houston, TX.

Booth #15

<http://www.thompsonthrift.com>



“BEING ABLE TO WORK WITH THE TECHNOLOGY WALSH HAS TO OFFER HAS OPENED MY EYES TO THE FUTURE OF BOTH THE INDUSTRY AND WALSH AS A COMPANY.”

Eric, Heavy Civil Intern

THE WALSH GROUP



**WE OFFER ENTRY-LEVEL AND INTERNSHIP/CO-OP OPPORTUNITIES.
PLEASE VISIT OUR WEBSITE FOR MORE DETAILS. AN EQUAL OPPORTUNITY EMPLOYER.**

929 WEST ADAMS STREET | CHICAGO, ILLINOIS 60607 | P.312.563.5400

WWW.WALSHGROUP.COM



Tishman is one of the country's largest and most respected builders. We provide a wide range of clients with full-service construction solutions and manage billions of dollars of at-risk work around the world. With over 110 years of experience in the construction industry, Tishman is responsible for the construction of more than 500 million square feet of space incorporating facilities of every size and type: office, hotel, entertainment, residential, retail, medical, educational, transportation, recreational and institutional.

Booth #24

<http://tishmanconstruction.com>



Titan Electric is a distinguished contractor providing electrical, low voltage, fire alarm, fiber and design build services throughout the Chicagoland area. We provide electrical and communication services including design, installation, testing, long-term service and maintenance on a wide array of projects. We pride ourselves in creating a track record of trust, built on performance, dedicated to doing the job right, quality above and beyond and building long-term relationships, one job at a time. By consistently performing in a manner that distinguishes us from the competition, we demonstrate our planning expertise, provide the services that we promise and prove that our client is the most important member of the team. For more information on Titan, please visit www.titan-elec.com.

Booth #82

<http://www.titan-elec.com>

A graphic advertisement for Tishman, set against a dark blue background with a stylized city skyline. The skyline is composed of various building silhouettes in shades of blue and black. In the foreground, the Tishman logo (a red 'T' with a horizontal bar) is prominently displayed. Below the logo, the word 'TISHMAN' is written in large, white, bold, uppercase letters. Underneath 'TISHMAN', the text 'An AECOM Company' is written in a smaller, white, sans-serif font. At the top of the graphic, the text 'Proudly Building Chicago for Over 40 Years!' is written in red. Below this, the text 'For over 40 years, we have provided our Chicago clients with full-service construction solutions including:' is written in red. This is followed by a list of services in red, arranged in two columns: 'Construction Management', 'Program management', 'General contracting', and 'Design-build'.

Proudly Building Chicago for Over 40 Years!

For over 40 years, we have provided our Chicago clients with full-service construction solutions including:

- Construction Management
- Program management
- General contracting
- Design-build

TISHMAN
An AECOM Company



Titan Electric

creating
a track record of
trust built on
performance

dedicated
to doing the job
right

Quality
above
Quality
above
and **beyond**

POWERING THE FUTURE

www.titan-elec.com



William F. Traylor founded Traylor Bros., Inc. in 1946, finding success by taking on — and succeeding with — extremely challenging projects. His combination of honesty, courage, and innovative abilities are the traits that embody the firm to this day. Traylor Bros., Inc. is one of the nation's leading heavy civil contractors. We have a staff of dedicated professionals employing some of the most innovative construction techniques in the industry to build landmark bridges, tunnels, and marine structures.

Booth #77

<http://www.traylor.com>



Webcor Builders is among the leaders in large-scale, commercial construction in California. We have spent the last 42 years defining the skylines in San Francisco, Los Angeles, and San Diego. Our self-performing concrete and interior construction divisions are also industry leaders and pursue and execute projects independent of our general contractor operations. Webcor is consistently ranked among ENR's Top 100 General Contractors and Concrete Construction CC 100. Over 40 years of serving clients such as Oracle, eBay, Lucasfilm, Starwood Lodging, and the California Academy of Sciences has secured Webcor's position as a distinguished builder. Webcor currently has over 400 employees and over \$1 billion of contracts in place.

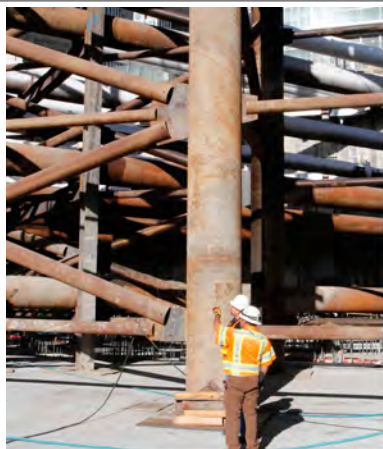
Booth #33

<http://www.webcor.com>

TRAYLOR
TRAYLOR BROS., INC.

Founded in 1946, Traylor Bros., Inc. has spent the last 68 years working with clients to help turn their visions into reality. Your partner from day one until ribbon cutting, we provide the best people and resources to build some of the safest, most innovative bridge structures in the nation.

For more information or to discover career opportunities, visit www.Traylor.com



**BE BOLD
AND CRAFT
YOUR OWN
CAREER**



“I chose to work for Webcor for the opportunity to be a part of some of the most challenging and diverse projects in the San Francisco area.”
ROBERT KAJOME — PROJECT ENGINEER

WE ARE HIRING!
Visit us at:
www.webcor.com
[linkedin.com/company/webcor-builders](https://www.linkedin.com/company/webcor-builders)

WEBCORBUILDERS
SAN FRANCISCO LOS ANGELES
SAN DIEGO GUAM ALAMEDA





Weis Builders builds solid relationships. We continue to exceed client's expectations with our versatility, responsiveness, talented associates, and progressive attitude. We are ranked among the top US construction companies by Engineering News Record. We complete projects throughout the country from office locations in Minneapolis and Rochester, MN; Chicago, IL; and Dallas, TX. Weis Builders excels in various markets, including multi-unit residential, senior living, hospitality, retail, commercial, and healthcare. We support the development needs of our clients by providing delivery methods such as general contracting, design/build, and construction management.

Booth #78

<http://www.weisbuilders.com>



The Weitz Company of today descends from a small carpentry shop founded in 1855 by Charles H. Weitz, an entrepreneurial German immigrant, in Des Moines, Iowa. Weitz is one of the oldest commercial general contractors in the United States and currently ranks 65th in Engineering News-Record magazine's Top 400 Contractors survey. Our financial strength, longevity and stability through 150+ years of economic cycles, and commitment to our Core Values positions us as a leader in the construction industry with the ability to attract and retain quality personnel and maintain long-term repeat client relationships.

Booth #30

<http://www.weitz.com>



Western Utility is a respected contractor headquartered in the Chicago area. We take great pride in our strong focus on client relationships and continual growth as a company. These commitments have allowed Western to consistently increase in both size and revenue year after year.

In addition to the Chicago area, Western operates in Iowa, Wisconsin, Michigan, Indiana and Florida including offices in Champaign IL and Fort Meyers FL. We offer maintenance, construction and installation services specializing in the energy, transportation, telecommunications and utility construction industries.

Booth #43

<http://westernutility.com>



White Construction, Inc. (WCI) formed its Wind Power Division to serve the fastest growing sector of renewable energy in North America. Usage of clean wind power systems can realize immediate benefits for the environment. With WCI's combined strengths of experience in heavy industrial construction, heavy highway/road building capabilities, and heavy rigging and lifting, the addition of wind power construction to WCI's broad list of services was a natural development.

Booth #40

<http://www.whiteconstruction.com>



Established in 1939, Wight & Company is one of the country's top-ranked design firms offering architecture, interior design, engineering and construction services to public and private sector clients. With diverse market strengths, Wight's expertise spans education, corporate, commercial, retail, municipal and federal sectors. The firm maintains a team of 175 professionals. Led by the talents and insight of its people, Wight creates enduring client relationships founded on trust and sustained by performance beyond expectations. The firm focuses on what clients consider important - the advancement of organizational goals, aligning missions with facilities, employee productivity, healthy environments, and energy efficiency delivered through an integrated approach.

Booth #11

<http://www.wightco.com>

*On behalf of all the students,
faculty and staff of the Building
Construction Management
department, thank you to all of
the Spring 14 BCM Career Fair
participants!*

*Please save Thursday,
September 25th, 2014 for the
Fall BCM Career Fair!*